

# Is Your Business Ready to Manage Inventory More Efficiently?

This must-have assessment will help you determine if it's time to explore and implement new systems.



# Accurate inventory management is crucial to your organization's ability to deliver on its promises.

**To ensure you're able to do this, you must be able to:**

- ▶ Manage inventory across multiple warehouses and locations.
- ▶ Track and record stock movements.
- ▶ Avoid shortages and ensure timely delivery without maintaining excess inventory.
- ▶ Access real-time, accurate information from your desktop or mobile device.

**Most companies, however, are failing to tick all these boxes - without even realizing it.**

To help we have created the ultimate assessment to give your organization clarity on how effectively you're able to manage your inventory using your existing systems.

As you go through the following self-assessment, you should gain more clarity on whether it's time to take the next step toward improved inventory control.

# Does your company need to improve its inventory management processes?

As you review the following list, make a note of whether each statement is true for your organization.



If you answer 'yes' to more than seven of these statements, it's time to consider a new system to help you optimize your inventory management processes.

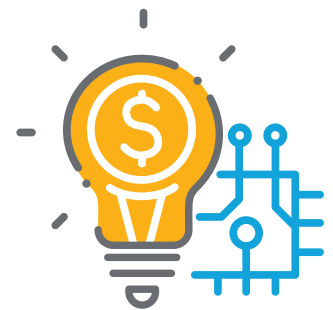
	yes	no		yes	no	
1	<input type="checkbox"/>	<input type="checkbox"/>	We have (or suspect we have) some inventory that's overstocked or not moving.	8	<input type="checkbox"/>	We find it challenging to replenish across multiple locations and/or 3PL providers.
2	<input type="checkbox"/>	<input type="checkbox"/>	We have SKUs that are obsolete and/or have been replaced with another SKU.	9	<input type="checkbox"/>	We find it challenging to manage RMAs (Return Material Authorizations) because we don't have an effective process in place.
3	<input type="checkbox"/>	<input type="checkbox"/>	We have encountered a situation where we lost sales due to stock-outs.	10	<input type="checkbox"/>	We must manually balance our inventory subledger accounts.
4	<input type="checkbox"/>	<input type="checkbox"/>	We aren't sure how much inventory we have on the shelves.	11	<input type="checkbox"/>	We think improved inventory management could increase staff productivity.
5	<input type="checkbox"/>	<input type="checkbox"/>	We regularly find that the numbers from our inventory counts don't match the numbers in our system.	12	<input type="checkbox"/>	We find it challenging to determine what's in our sales pipeline.
6	<input type="checkbox"/>	<input type="checkbox"/>	We find it difficult to plan inventory levels due to the number of SKUs, coupled with fluctuating or seasonal demands.	13	<input type="checkbox"/>	We must manually compile reports to evaluate business performance. We regularly find data inaccuracies as a result of manual effort.
7	<input type="checkbox"/>	<input type="checkbox"/>	We have SKUs with long or varied order lead times.	14	<input type="checkbox"/>	We spend too much time transferring data back and forth between systems.

# What are your next steps?

The system you use to manage your inventory plays a critical role in the success of your business. Selecting an integrated ERP solution that pulls inventory management and all other aspects of your business into a single system gives you a leg up on the competition.

**As you evaluate software solutions, here are some of the features to look for:**

- ▶ Inventory management based on diverse costing models.
- ▶ Support for multiple units of measure and pricing.
- ▶ Stock movement tracking, including goods receipts and stock transfers.
- ▶ Inventory planning and forecasting tools.
- ▶ Drop-shipping capability.
- ▶ User-friendly, real-time reporting.



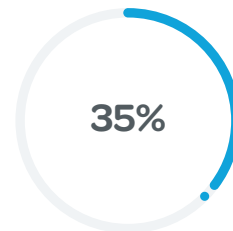
# Results of implementing an inventory system

Implementing an ERP system can help you solve the challenges you identified in the above assessment and optimize your inventory. Beyond that, our customers have seen tangible benefits like:

## Inventory Planning is a Competitive Advantage



Reduced inventory investment



Reduced expediting & emergency shipments



Reduced replenishment spending



Reduced planning time



Reduced stock-outs



Increased productivity

We're experts at implementing ERP solutions designed to optimize inventory, simplify processes and ultimately generate measurable results for your business.

Our team has a depth of knowledge in the wholesale distribution space, a keen understanding of business processes, and deep technological expertise that uniquely positions us to understand your business almost as well as you do. We're here for you every step of the way - through implementation and beyond.

**"We need to keep evolving with our challenging customers, our competitors, the environment around us and the marketplaces. We do that together with ProjectLine - it's now a team. As we face new challenges in our business, they're along with us to help us solve those challenges."**




**Sean Lavin**  
President  
Aircom Instrumentation

We want to learn more about your business. Connect with one of our ProjectLine ERP experts today to start the conversation.

**T** 866 460 7765

**E** [info@projectline.ca](mailto:info@projectline.ca)

[www.projectline.ca](http://www.projectline.ca)



We sell, implement and support best-in-class ERP software for small and mid-size businesses. We believe putting people first is the best way to make technology work for them. It's a conviction that sets us apart.

The shift to a new ERP system can be daunting and disruptive. But it doesn't have to be. We ease the inevitable uncertainty that comes with an ERP project, helping you transition with the highest level of empathy, consideration and fit.

**T** 866 460 7765

**E** [info@projectline.ca](mailto:info@projectline.ca)

[www.projectline.ca](http://www.projectline.ca)

**PROJECTLINE**   
*The human side of ERP*